



Paladin



**Environment and Security
Management Solution**

Paladin

Environment and Security Management Solution

Paladin™, from RiT Technologies, is especially geared for mission-critical organizations. It provides a vital and comprehensive environment and security management solution, with 24/7 real-time environment monitoring and event-driven security. Paladin meets the stringent needs of datacenters and enterprise communications rooms and is ideally suited for remote physical sites and facilities, such as cellular base stations, gas and fuel repositories, and power/electric facilities, where environment and security management is a fundamental requirement.

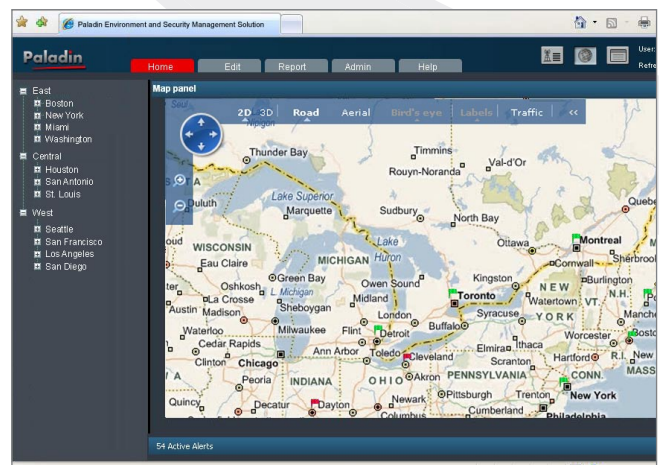
Safety and security breaches such as cooling malfunction, fire, flooding, equipment malfunction and unauthorized intrusion, can cause significant damage to a facility and its equipment if not effectively monitored and controlled, and can even result in total shutdown of services. Drawing on RiT's many years of industry experience and expertise in software, hardware and infrastructure solutions, Paladin delivers the most effective environment and security control solution available today.

Beyond being packed with features, Paladin is also extremely flexible. It can manage equipment from other vendors, so users can enjoy its significant benefits and still leverage their investment in existing equipment, such as sensors, IP cameras, and other network equipment.

Advanced, Proactive Defense

With Paladin, customers are able to seamlessly monitor, manage, and control facilities in real time. Paladin's supremacy as a management tool is achieved through support for a wide variety of sensors and cameras, incorporation of sophisticated algorithms and management functions, and use of the latest control and data acquisition tools and methodologies. Additionally, Paladin's technology addresses standards such as the Telecommunications Infrastructure Standard for Data Centers from ANSI/TIA-942 that clearly defines datacenter infrastructure design.

Paladin continuously analyzes all monitored data in real time, automatically deciding if an action should be initiated in response to a situation. Any appropriate action can be initiated either automatically by the system, based on pre-defined business logic, or manually by an authorized user.



Get Smart Protection for

Paladin can track information regarding a wide range of conditions:

■ **Environment**

- Temperature
- Humidity
- Flooding
- Power units of various kinds
- Smoke detection

■ **Security**

- Cabinet door open/close
- Access control
- Intrusion detection

■ **Utilities and Equipment**

- Remote devices
- Fuel management
- Generators
- Cellular network levels

Comprehensive, Easy-to-use Solution

Paladin is the ultimate real-time active defense solution that sees more, knows more, and does more to protect your mission-critical sites and facilities. With Paladin's revolutionary preventive capabilities, your operations keep earning 24/7. Modular by design, and offering a broad range of hardware configurations, dedicated sensors and software options, Paladin can be tailored to meet your specific requirements.

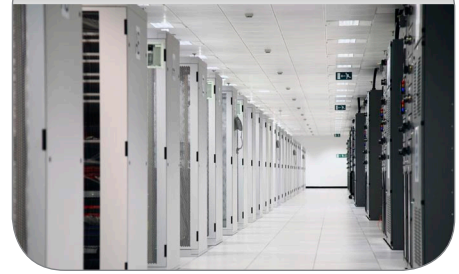
While the Paladin system offers a myriad of features and capabilities, it is surprisingly easy to configure and use, thanks to its intuitive management application. Also available is a central management system with an advanced web interface (GUI) capable of monitoring multiple local and remote controllers.

An optional premium management application can be added to support the needs of large and complex facilities.

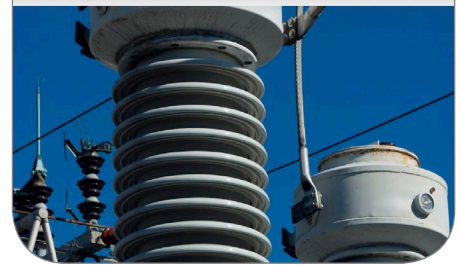
Key Benefits and Capabilities

- Provides a one-stop-shop for a wide variety of environment and security management needs
- Able to protect facilities in real time, comprehensively and accurately
- Reduces human error dramatically by automating preventive and corrective actions
- Can send alerts remotely over IP and/or cellular networks
- Wide variety of sensors supported out of the box with easy adaptation to additional sensors from practically any vendor
- Decreases downtime
- Increases life span of network equipment
- Customizable threshold definition with easy assignment to multiple devices
- Powerful, friendly web-based management software with numerous management functions

Datacenters



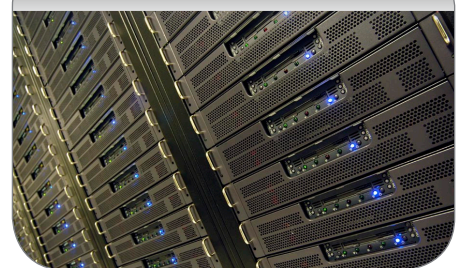
Power/electric facilities



Cellular base stations



Communication rooms



for Your Operations

About RiT Technologies

RiT is a leading provider of intelligent network and infrastructure solutions.

RiT's advanced solutions provide organizations and carriers with everything they need to centrally manage infrastructure assets and networked components for highly effective planning, implementation and operational control, improved reliability and rapid ROI.

Delivering sophisticated features such as auto-discovery and real-time analytics across the infrastructure without interfering with network traffic, RiT transforms traditional network architecture into intelligent scalable infrastructure.

RiT Enterprise solutions address datacenters, communication rooms and workspace environments, ensuring maximum utilization, reliability, enhanced uptime, physical security, automated deployment, asset tracking, and troubleshooting.

RiT Environment and Security solutions enable companies to effectively control their datacenters, communications rooms and remote physical sites and facilities in real-time, comprehensively and accurately.

RiT Carrier solutions provide carriers with the full array of network mapping, testing and bandwidth qualification capabilities needed for access network installation and service provisioning. They are ideal for NGN access network migration, digital services qualification, and access network maintenance.

RiT solutions are deployed around the world, in a broad range of enterprise and carrier environments, including: enterprises, branch offices, government agencies, financial institutions, airports, medical institutions, datacenters, and world-leading service providers.

U.S. Headquarters

RiT Technologies Inc.
Tel: +1.201.512.1970
Fax: +1.201.512.1286
1.800.RiT.1647
email: marketing@rittech.com

International Headquarters

RiT Technologies Ltd.
Tel: +972.3.645.5151
Fax: +972.3.647.4115
email: mkt@rittech.com

RiT Rep. in China

Tel: +86.10.5172.7712
Fax: +86.10.5172.7719 ex. 606
email: mktg.china@rittech.com

RiT Rep. in Czech Republic

Tel: +42.02.253.41245
Fax: +42.02.253.41241
email: mktg.czech@rittech.com

RiT Rep. in Italy

Tel: +39.02.9011.2500
Fax: +39.02.9026.9960
email: mktg.italy@rittech.com

RiT Rep. Office in Russia

Tel: +7.495.604.8005
Fax: +7.495.604.8153
email: mkt@rit.ru

RiT Rep. in UK

Tel: +44.870.874.3030
Fax: +44.870.874.3040
email: mktg.uk@rittech.com

RiT Rep. in India

Tel: +91.22.2471.5263
Fax: +91.22.2471.1616
email: mktg.india@rittech.com

